

Temperature Detector in Thrust Bearing Case Style B, Spring and Ring Method

Suggested installation procedure

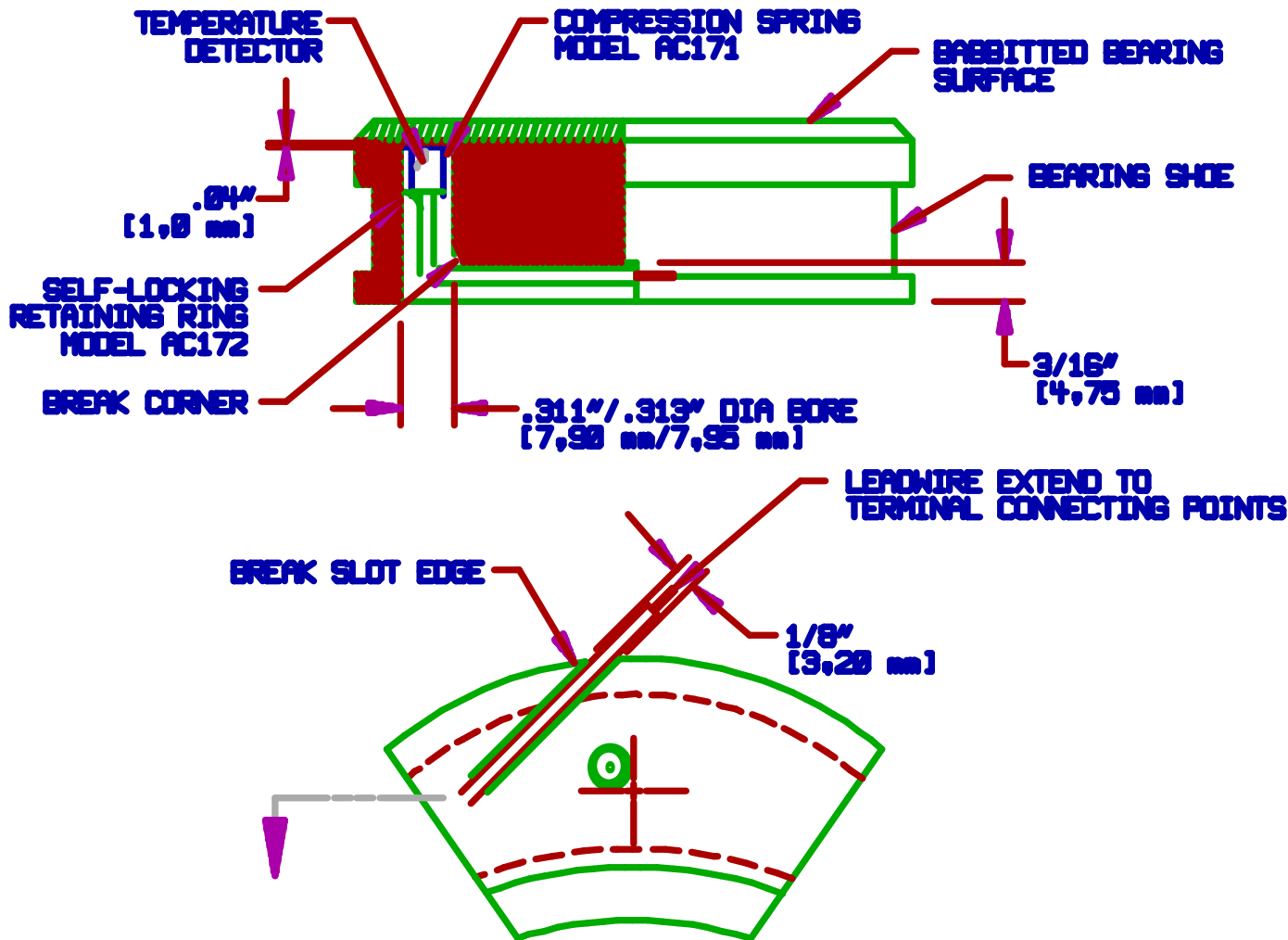
1. Bore a .311/.313" (7,90/7,95mm) diameter hole into the bearing shoe to within .04" (1,0mm) of the babbitt undersurface. The hole bottom must be flat.

NOTE: Be sure hole is **NOT** larger than .313" (7,95mm). If the hole is too big, the ring will **NOT** fit properly.

2. Mill a groove in the back of the bearing shoe 1/8" (3,20mm) wide by 3/16" (4,75mm) deep. The groove should extend from the .311/.313" (7,90/7,95mm) hole to the desired location for leadwires to leave the bearing. Terminal connecting points must be located within the leadwire length of the temperature detector being installed.
3. Slip the compression (coil) spring over the leadwire and onto the detector case. Slip the self-locking retaining ring over the leadwire until it comes in contact with the spring. The angle of the locking prongs must be away from the detector case.
4. Slip a short length of metal tubing over the leadwire and into contact with the retaining ring, 3/16" (4,75mm) O.D. thinwall stainless steel tubing is recommended. Push the detector, spring, and retaining ring into the bottom of the .311/.313" (7,90/7,95mm) diameter hole using 3/16" (4,75mm) tubing as an insertion tool. Remove the tubing.
5. Lay the leadwire flat in the bottom of the milled groove in the bearing shoe. Use mechanical retainers to secure the leadwire in the slot or pot the leadwire in the groove using an epoxy or other suitable potting compound compatible with the bearing shell material, temperature, and service conditions.

NOTE: Although the illustration on the following page depicts a thrust bearing, the above installation procedure can be used with other types of bearings, and also with equipment other than bearings.

DR: <u>JEH 05-15-95</u>	Minco CAGE IDENT. 09359	Engineering Instruction 181 ECO #43020, Rev F
CHK: <u>BAM 05-15-95</u>		
ENG: <u>BAL 05-15-95</u>		
APP: <u>DLW 04-20-05</u>		
		Page 1 of 2



Minco (Main Office)
 7300 Commerce Lane
 Minneapolis, MN
 55432 USA
 Tel: 1.763.571.3121
 Fax: 1.763.571.0927

Customer Service/
 Order Desk:
 Tel: 1.763.571.3123
 Fax: 1.763.571.0942
 custserv@minco.com
 www.minco.com

Minco S.A.
 Usine et Service
 Commercial, Z.I.
 09310 Aston, France
 Tel: (33) 5 61 03 24 01
 Fax: (33) 5 61 03 24 09

Minco EC
 Hirzenstrasse 2
 CH-9244 Niederuzwil
 Switzerland
 Tel: (41) 71 952 79 89
 Fax: (41) 71 952 79 90

ISO 9001: 2000
 EI 181 (F)
 © Minco 04-2005

MINCO

www.minco.com