

AC191 Terminal Block Mounted on the Bearing Shoe

Contents

Contents of the AC191 package:

- Terminal block



Reference Documents

Install the temperature detector according to the appropriate procedure. See table below for the correct Installation Instruction.

Installation Instruction	Case Style	Case Diameter	Method of Installation
II #164 (formerly EI 164)	A	0.275" (7 mm)	Babbitt (Sleeve Bearing)
II #167 (formerly EI 167)	A	0.275" (7 mm)	Babbitt (Thrust Bearing)
II #180 (formerly EI 180)	B	0.188" with 0.250" ϕ flange (4,75 mm with 6,35 mm ϕ flange)	Babbitt (Thrust Bearing)
II #181 (formerly EI 181)	B	0.188" with 0.250" ϕ flange (4,75 mm with 6,35 mm ϕ flange)	Spring and Ring
II #184 (formerly EI 184)	C & D	0.125" & 0.080" (3,20 mm & 2,05 mm)	Potting

Procedure

Follow the procedure below to mount the AC191 Terminal Block on the bearing shoe. This procedure is adaptable to other types of bearings and to equipment other than bearings.

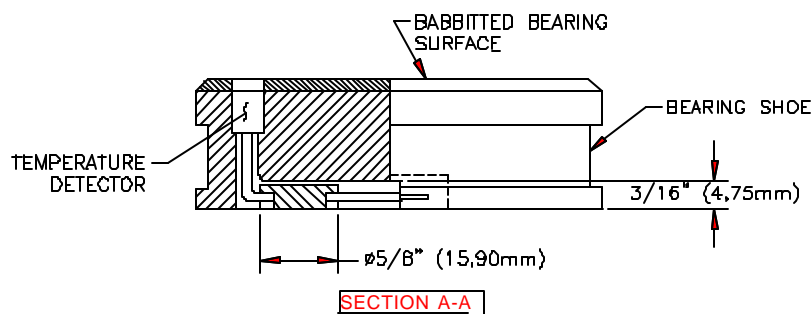
Step	Action
1	Drill or counterbore a 0.625" \pm .005" (15,9 mm \pm 13 mm) diameter hole, .1875" deep, in the bearing shoe at the desired location. The terminal block may be located adjacent to the detector leadwire hole, and must be mounted within the leadwire length of the detector being installed.
2	Insert the terminal block in the 0.625" (15,9 mm) diameter hole with the leadwire grooves aligned with the direction the leadwires will lay.
3	Peen over the metal of the shoe into the recess in each quadrant of the terminal block to hold the terminal block securely in place.
4	Form the stripped and tinned ends of the detector leadwires into the solder cups of the terminal block. Do the same with the leadwires exiting the terminal block. Solder the leadwires into the solder cups with 60/40 alloy solder (for use to 360°F (182°C)) or higher temperature solder if service conditions require.
5	Lay the leadwires flat in the bottom of the milled groove in the bearing shoe. Pot the leadwires in the groove using an epoxy or other potting compound compatible with the bearing shoe material, temperature and service conditions..

Continued on next page

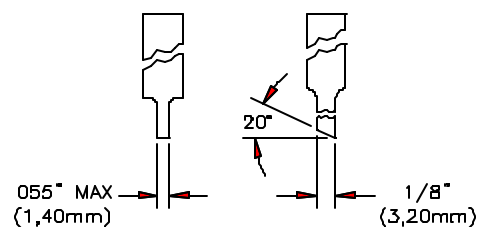
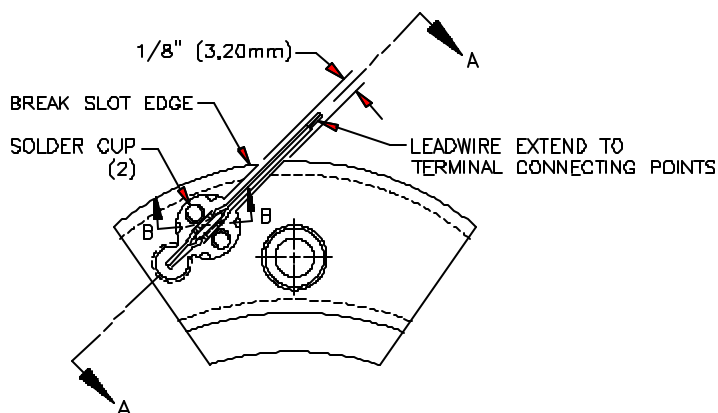
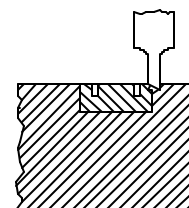
AC191 Terminal Block Mounted on the Bearing Shoe, Continued

Drawing

See the drawing below for the suggested installation procedure.



INSTALLATION OF TERMINAL BLOCK MODEL AC191



SUGGESTED STAKING TOOL FOR INSTALLING TERMINAL BLOCK MODEL AC191

Worldwide Headquarters
 7300 Commerce Lane
 Minneapolis, MN 55432 USA
 Tel: 1.763.571.3121
 Fax: 1.763.571.0927
 sales@minco.com
 www.minco.com

European Headquarters
 Usine et Service
 Commercial, Z.I.
 09310 Aston, France
 Tel: (33) 5 61 03 24 01
 Fax: (33) 5 61 03 24 09

Asia Pacific Headquarters
 20 Science Park Road
 #02-31 Teletech Park
 Singapore Science Park II
 Singapore 117674
 Tel: (65) 6511 3388
 Fax: (65) 6511 3399

ISO 9001:2000 / AS9100B

© Minco 2006
 II #121 (-)
 ECO #43979

MINCO

A critical component of your success™

Flex Circuits
 Thermofoil™ Heaters
 Sensors
 Instruments