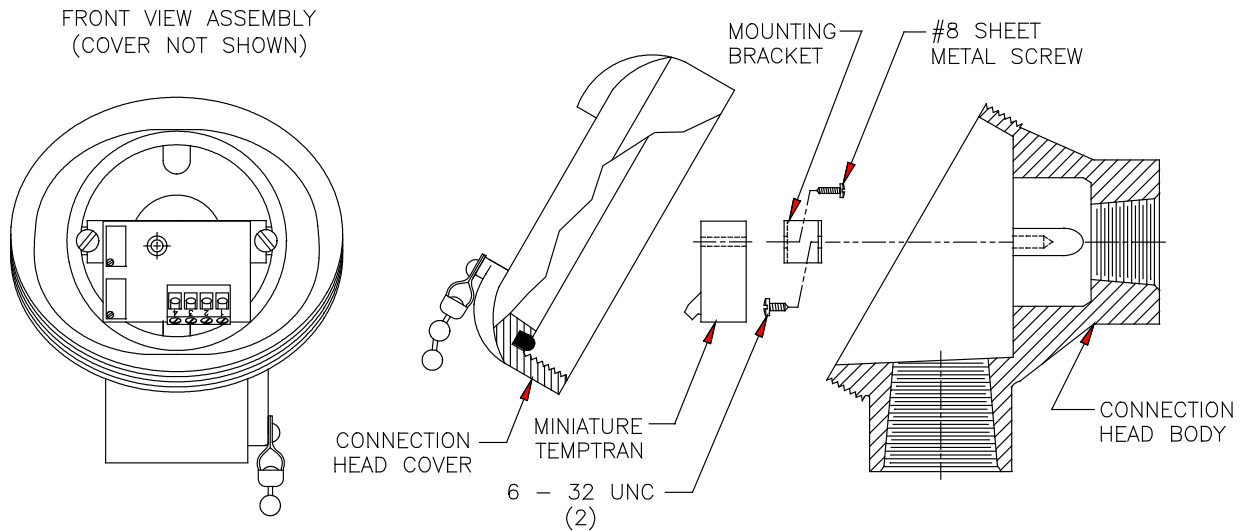
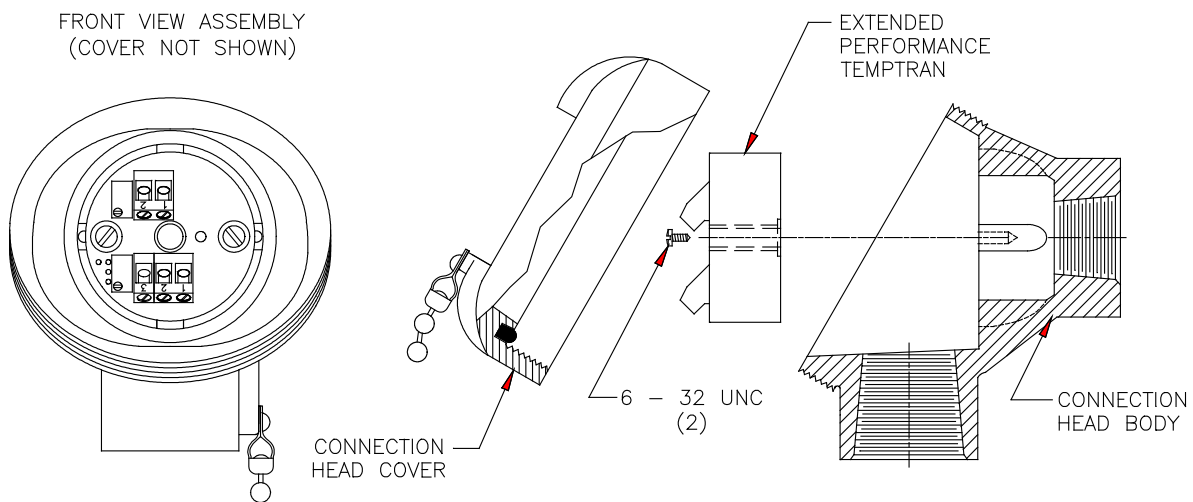


MINIATURE TEMPTRAN/ CONNECTION HEAD ASSEMBLY



1. Unscrew cover from connection head body.
2. Mount miniature Temptran to mounting bracket using #8 sheet metal screw.
3. Mount Temptran/bracket assembly to connection head body using 6 - 32 UNC screws.
4. Make necessary wiring connections.
5. Screw cover back onto connection head body and close tightly.

EXTENDED PERFORMANCE TEMPTRAN/ CONNECTION HEAD ASSEMBLY



1. Unscrew cover from connection head body.
2. Mount extended performance Temptran to connection head body using 6 - 32 UNC screws.
3. Make necessary wiring connections.
4. Screw cover back onto connection head body and close tightly.